

State of Wyoming Corner Record

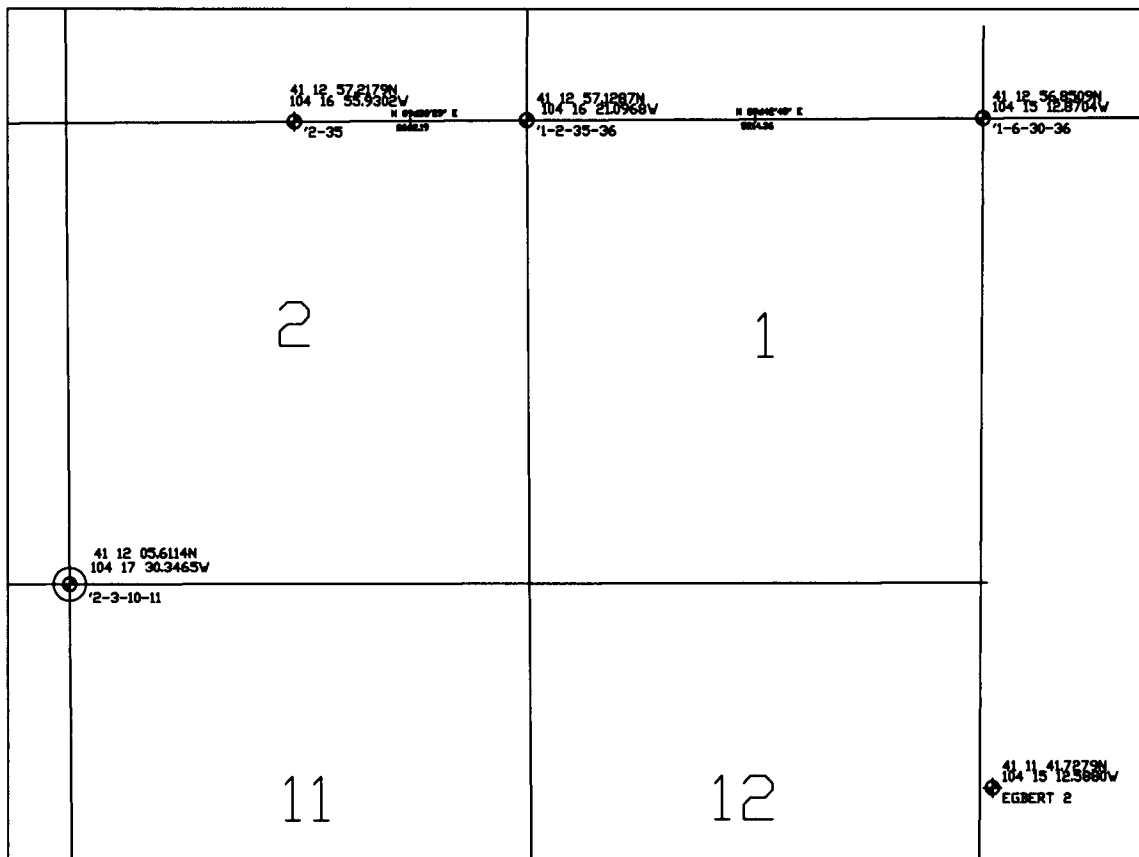
(In compliance with the **CORNER PERPETUATION AND FILING ACT**, Wyoming Statutes, 1997 Section 33-29-140 et. seq., and the Rules and Regulations of the Board of Professional Engineers and Professional Land Surveyors)

Reverse side of this form may be used if more space is needed.

Record of original survey and citation of source of historical information (if corner is lost or obliterated). Description of corner monumentation evidence found and/or monument and accessories established to perpetuate the location of this corner. Sketch of relative location of monument, accessories, and reference points with course and distance to adjacent corner(s) (if determined in this survey). Method and rationale for re-establishment of lost or obliterated corner.

Found: Badly erroded 24" x 10" x 8" sandstone completely buried under 5" of soil broken in half with no visible markings. Stone located 30 feet east and west of two fence lines running north-south and 30 feet north of an east-west fence.

Set: Placed broken stone together in an upright position where found.



LATITUDE AND LONGITUDE = NAD 1983

DISTANCES = WGS84 ELLIPSOID

NOTE: COORDINATES DERIVED USING MULTIPLE NGS OBSERVATIONS THROUGH THE ONLINE POSITIONING USER SERVICE AND A SURVEY GRADE GPS RECEIVER.

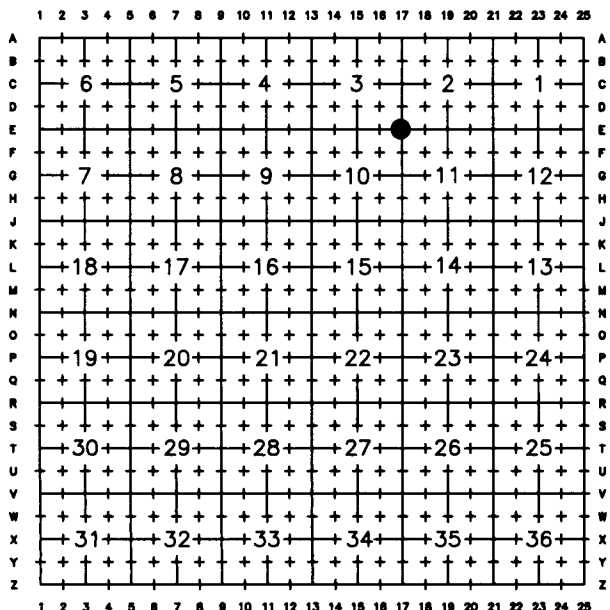


INDICATES MONUMENT THIS RECORD

Date of Field Work: 07-24-2004

Office Reference: 11066 DELTA Gross 2-2 T14NR62W-E17 1029

Cross Index Plat



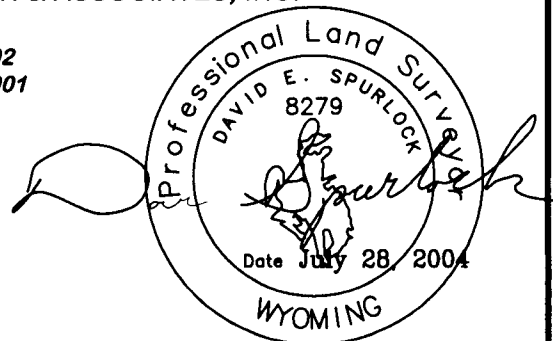
Firm/Agency, Address

this corner record provided by:
SPURLOCK LAND SURVEYING
 Dave Spurlock -- Surveyor
 UNDER CONTRACT TO:



RIFFIN & ASSOCIATES, INC.

1414 ELK ST., SUITE 202
 ROCK SPRINGS, WY 82901
 (307) 362-5028



RECORDED 8/23/2004 AT 12:31 PM REC# 395982 BK# 1832 PG# 1450
 DEBRA K. LATHROP, CLERK OF LARAMIE COUNTY, WY PAGE 1 OF 1

County: LARAMIE, Wyoming

Corner Name: SOUTH-WEST CORNER, Section: 2, T14N, R 62W, 6th P.M., Cross-Index No.: E17

SBRPEPLS/PLSW: March 1994; PLSW January 1998